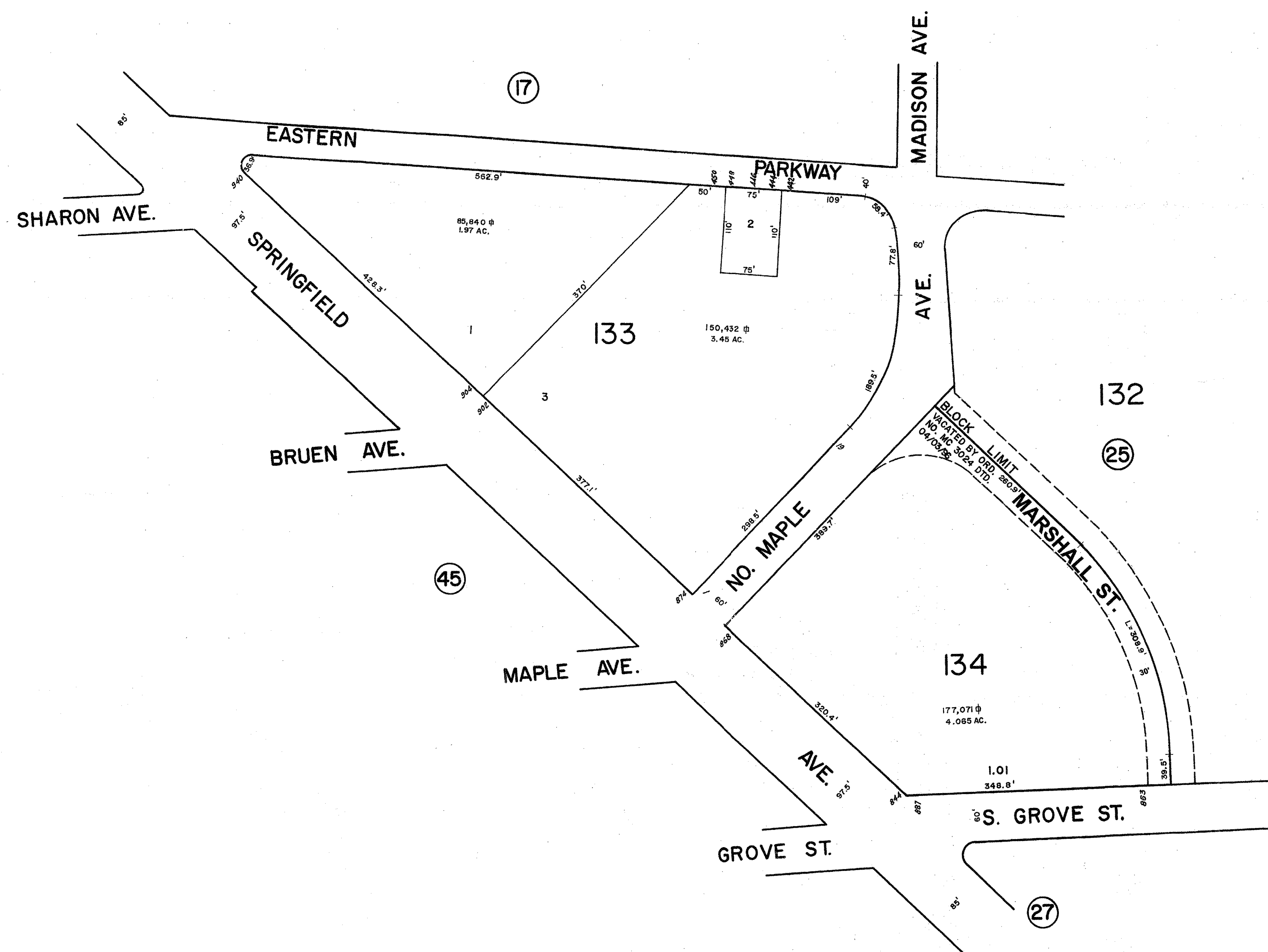


REVISIONS		
DATE	NAME	NO.



THIS SHEET IS A SCANNED COPY OF THE TAX MAP PREPARED BY APPRAISAL SURVEYS INC. SEPTEMBER, 1997. THE ORIGINAL APPROVED MAP IS ON FILE IN THE ASSESSORS OFFICE.

NEW JERSEY DEPARTMENT OF THE TREASURY
DIVISION OF TAXATION
APPROVED AS A TAX MAP PURSUANT TO THE
AUTHORITY OF N.J.S.A. 54:1-15 & N.J.S.A. 54:50-1
FOR THE DIRECTOR, DIVISION OF TAXATION
Bue Davison CTA Supervising Field Rep
Bue Davison, CTA Supervising Field Rep
DATE 11 2013 SERIAL NO. 1025

TAX MAP
TOWNSHIP OF IRVINGTON
ESSEX COUNTY, NEW JERSEY
SCALE 1" = 80' DATE 1/31/2013
CASEY & KELLER, INC.
MICHAEL LANZAFAMA, PLS
258 MAIN ST. MILLBURN, NJ 07041
TO SHOW CONDITIONS AS OF JANUARY 31, 2013