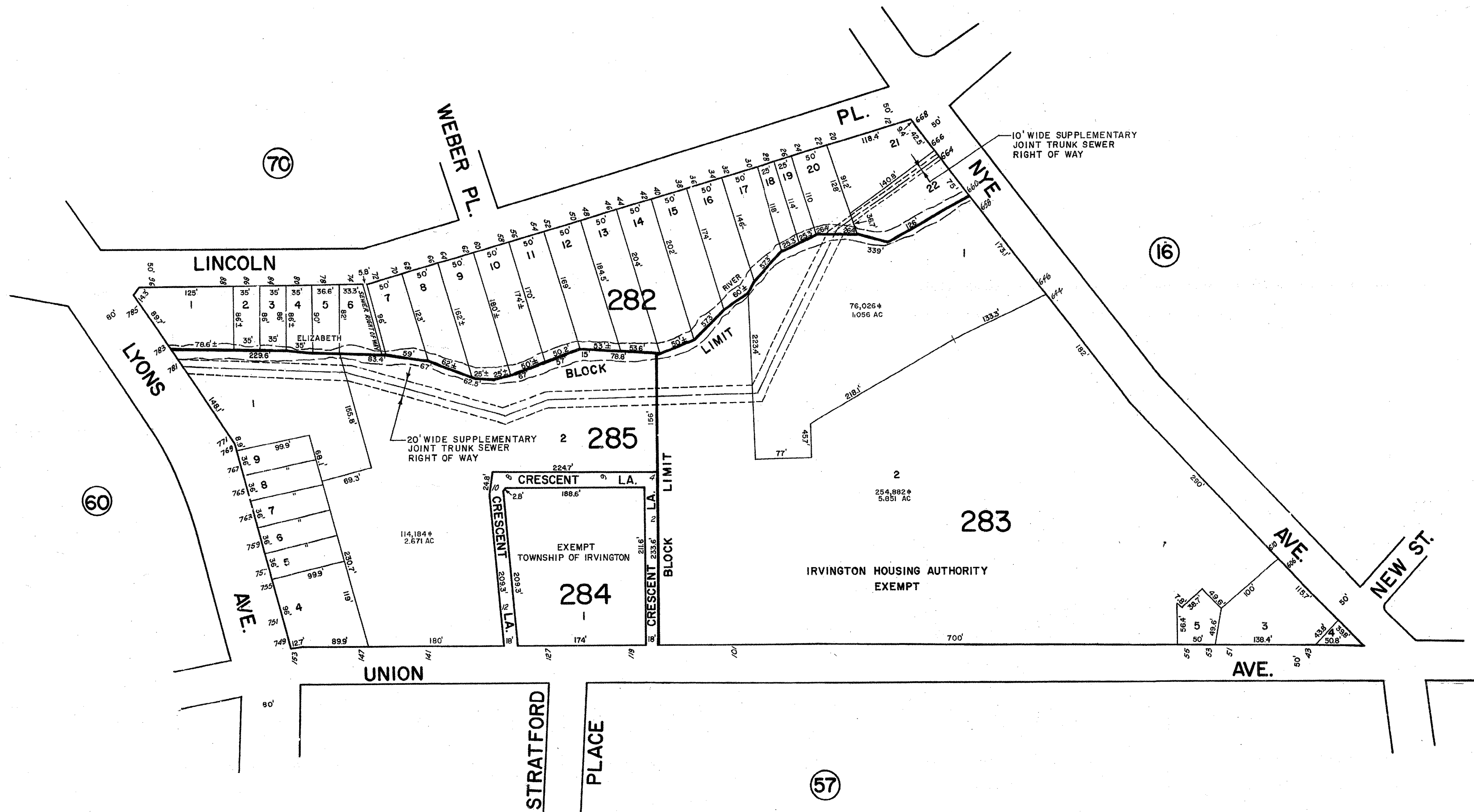


REVISIONS		
DATE	NAME	NO.



NOTE:
RIGHT OF WAY WIDTH AND LOCATION OF JOINT
TRUNK SEWER AND SUPPLEMENTARY JOINT
TRUNK SEWER EASEMENTS SHOWN HEREON ARE
BASED UPON INFORMATION FURNISHED BY THE
JOINT MEETING OF ESSEX AND UNION COUNTY
SEWERAGE AUTHORITY.

NEW JERSEY DEPARTMENT OF THE TREASURY
DIVISION OF TAXATION
PROPERTY ADMINISTRATION TAX MAP SECTION
APPROVED AS A TAX MAP PURSUANT TO THE
AUTHORITY OF N.J.S.A. 54:1-15 & N.J.S.A. 54:20-1
FOR THE DIRECTOR, DIVISION OF TAXATION

Sue Davison CTA Supervising Field Rep
Sue Davison, CTA Supervising Field Rep

DATE SEP 11 2013 SERIAL NO. 1025

TAX MAP
TOWNSHIP OF IRVINGTON
ESSEX COUNTY, NEW JERSEY
SCALE 1" = 80' DATE 1/31/2013

CASEY & KELLER, INC.
MICHAEL LANZAFAMA, PLS
258 MAIN ST. MILLBURN, NJ 07041
TO SHOW CONDITIONS AS OF JANUARY 31, 2013

THIS SHEET IS A SCANNED COPY OF THE TAX MAP PREPARED
BY APPRAISAL SURVEYS INC. SEPTEMBER 1997. THE ORIGINAL
APPROVED MAP IS ON FILE IN THE ASSESSORS OFFICE.