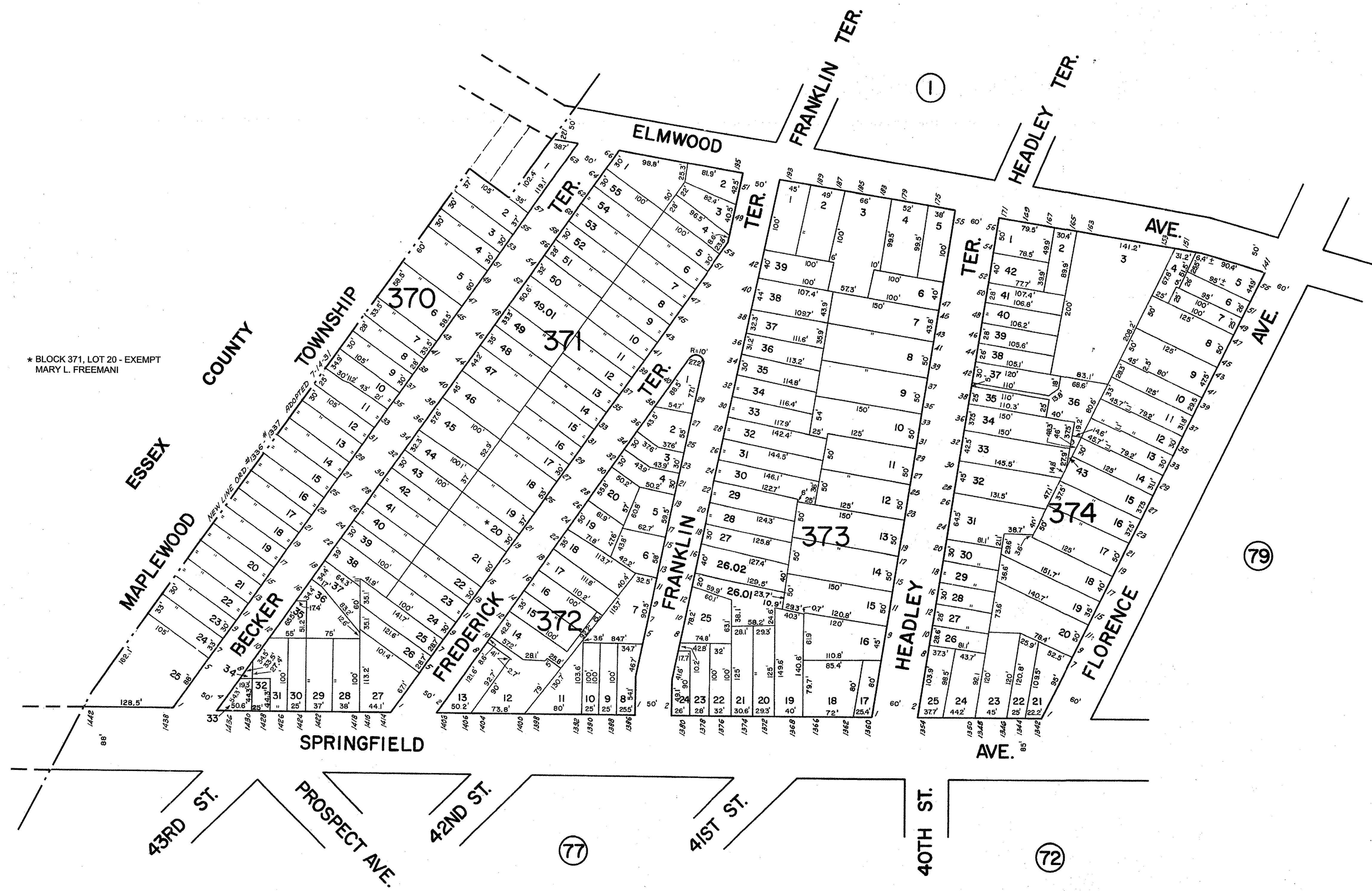


REVISIONS		
DATE	NAME	NO.



* BLOCK 371, LOT 20 - EXEMPT
MARY L. FREEMAN

NEW JERSEY DEPARTMENT OF THE TREASURY
DIVISION OF TAXATION
APPROVED AS A TAX MAP PURSUANT TO THE
AUTHORITY OF N.J.S.A. 54:1-15 & N.J.S.A. 54:50-1
FOR THE DIRECTOR, DIVISION OF TAXATION
Sue Dawson CTA Supervising Field Rep
Sue Dawson, CTA Supervising Field Rep
DATE SEP 11 2013 SERIAL NO. 1025

THIS SHEET IS A SCANNED COPY OF THE TAX MAP PREPARED
BY APPRAISAL SURVEYS INC. SEPTEMBER 1987. THE ORIGINAL
APPROVED MAP IS ON FILE IN THE ASSESSORS OFFICE.

TAX MAP
TOWNSHIP OF IRVINGTON
ESSEX COUNTY, NEW JERSEY
SCALE 1" = 80' DATE 1/31/2013
CASEY & KELLER, INC.
MICHAEL LANZAFAMA, PLS
258 MAIN ST. MILLBURN, NJ 07041
TO SHOW CONDITIONS AS OF JANUARY 31, 2013