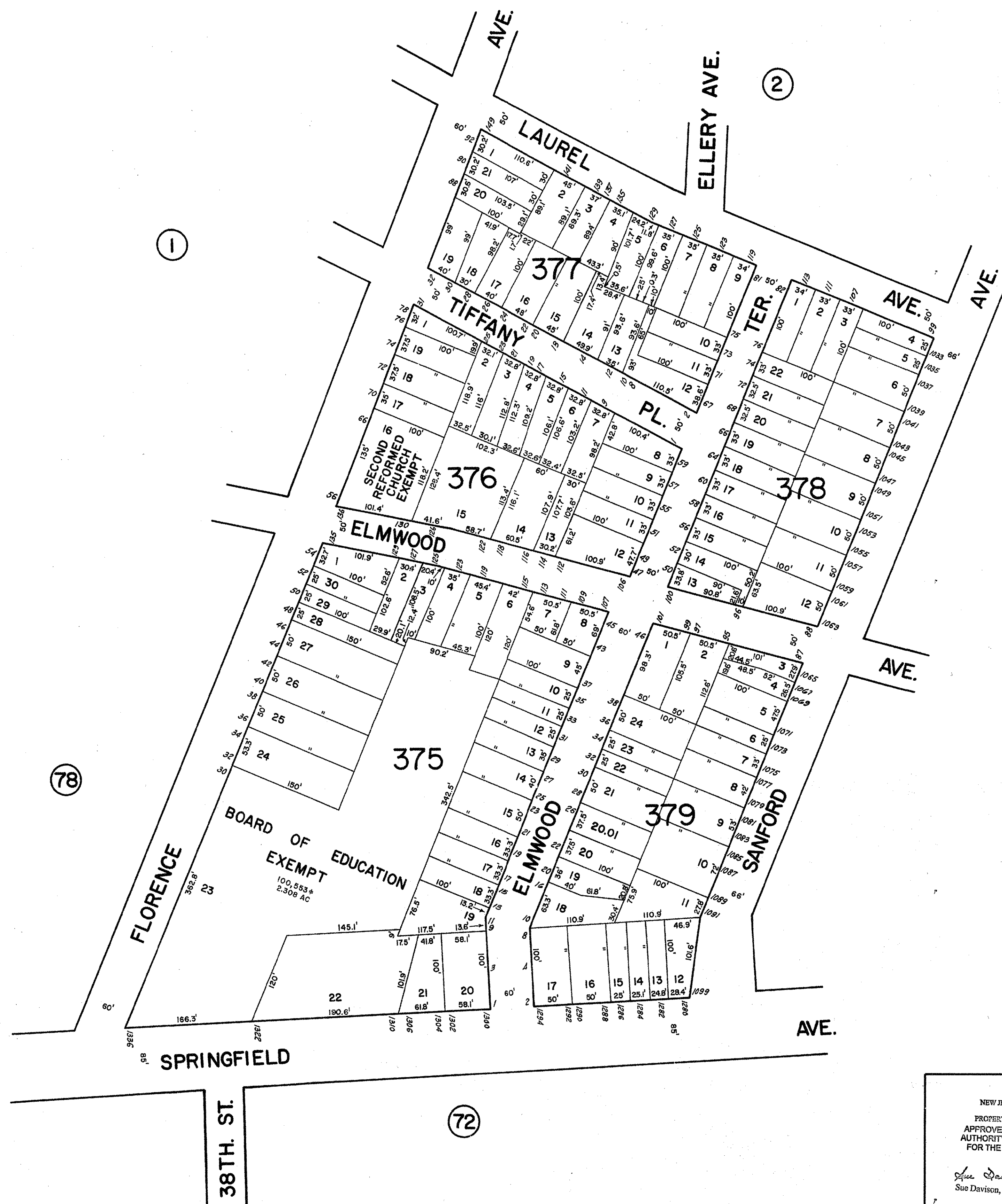


REVISIONS		
DATE	NAME	NO.



THIS SHEET IS A SCANNED COPY OF THE TAX MAP PREPARED BY APPRAISAL SURVEYS INC. SEPTEMBER 1997. THE ORIGINAL APPROVED MAP IS ON FILE IN THE ASSESSOR'S OFFICE.

NEW JERSEY DEPARTMENT OF THE TREASURY  
DIVISION OF TAXATION  
PROPERTY ADMINISTRATION TAX MAP SECTION  
APPROVED AS A TAX MAP PURSUANT TO THE  
AUTHORITY OF N.J.S.A. 54:1-15 & N.J.S.A. 54:ED-1  
FOR THE DIRECTOR, DIVISION OF TAXATION

*Sue Davison* CTA Supervising Field Rep  
Sue Davison, CTA Supervising Field Rep

DATE: **SEP 11 2013** SERIAL NO. **1025**

**TAX MAP**  
**TOWNSHIP OF IRVINGTON**  
ESSEX COUNTY, NEW JERSEY  
SCALE 1" = 80' DATE 1/31/2013  
**CASEY & KELLER, INC.**  
**MICHAEL LANZAFAMA, PLS**  
258 MAIN ST. MILLBURN, NJ 07041  
TO SHOW CONDITIONS AS OF JANUARY 31, 2013